

8

7

6

5

4

3

2

1

D

C

B

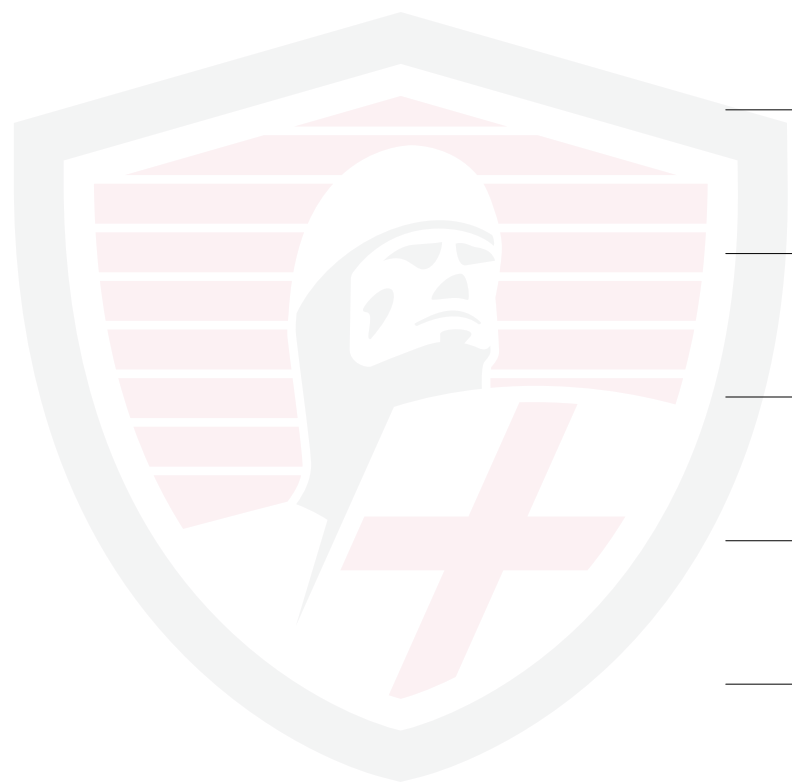
A

D

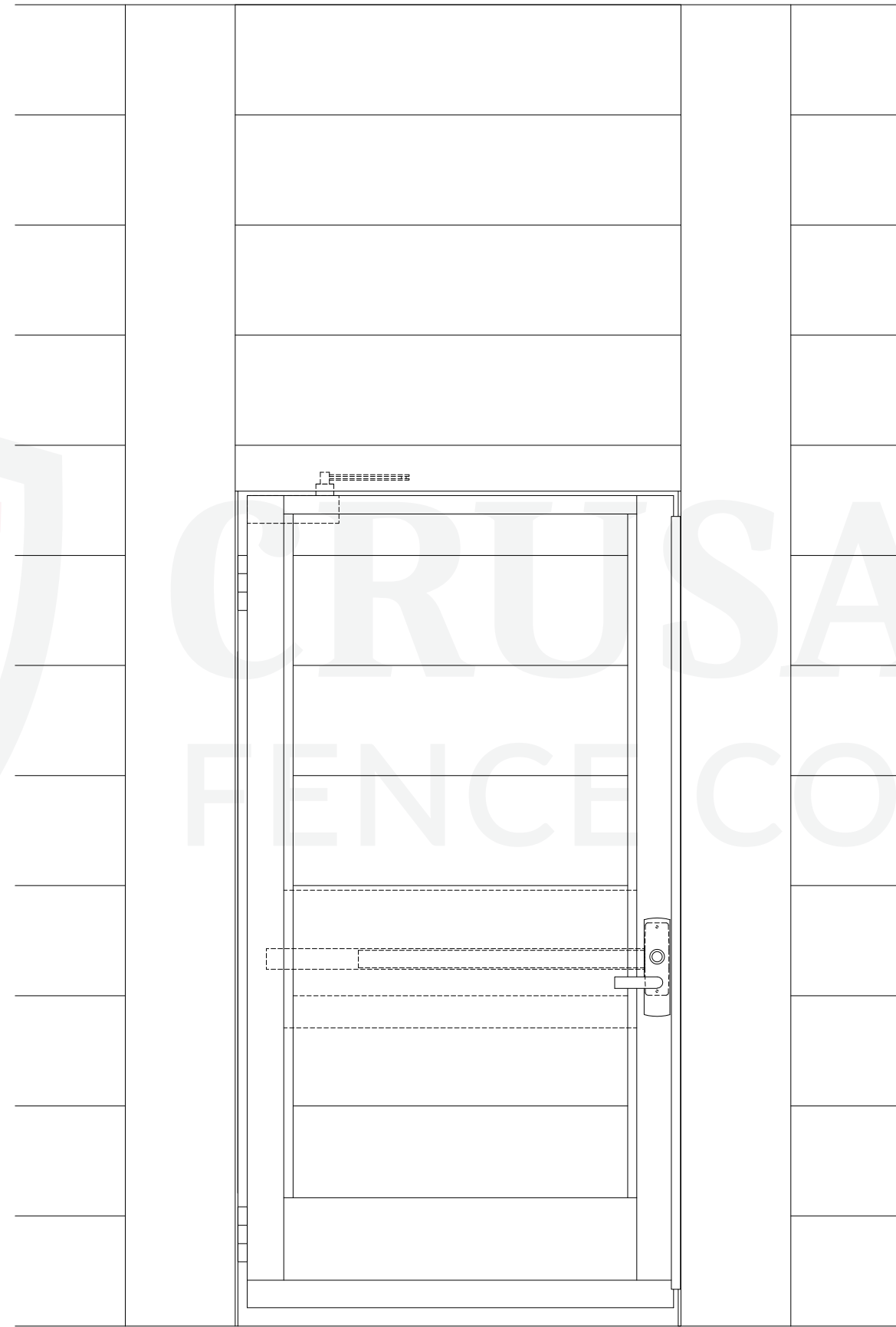
C

B

A



CRUSADER
FENCE COMPANY™



PATENT PENDING # 18/327,547

8

7

6

5

4

3

2

1

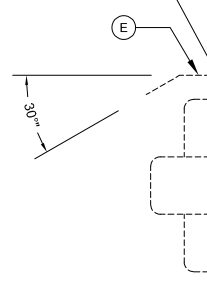
TRANSOM BILL OF MATERIALS

ITEM	DESCRIPTION	MATERIAL	FINSIH	QUANTITY
8	GATE POSTS	5"X5" SQ 11GA TUBE	GALVANIZED TO BE PC	2
9	GATE FRAME TRANSOM	5"X5" SQ 11GA TUBE	GALVANIZED TO BE PC	1
10	SPREADER BAR	2"X2" SQ 11GA TUBE	GALV - BURIED UNDRGRND	1

HARDWARE BILL OF MATERIALS

ITEM	DESCRIPTION	MATERIAL	FINSIH	QUANTITY
A	PANIC DEVICE	VON DUPRIN PA-AX-99NL X WH	626	1
B	OUTSIDE TRIM	VON DUPRIN 996L-NL R/V	630	1
C	HINGES	6" BUTT HINGES	630	2
D	CLOSER	4040XP w/ 18PA DROP PLATE	689	1
E	PANIC SHROUD (SEE DTL 4)	2"x1/4" + 2"x1/4"@30° FLAT BAR	630	1

MOUNT FLUSH @ TOP OF PANIC PLATE

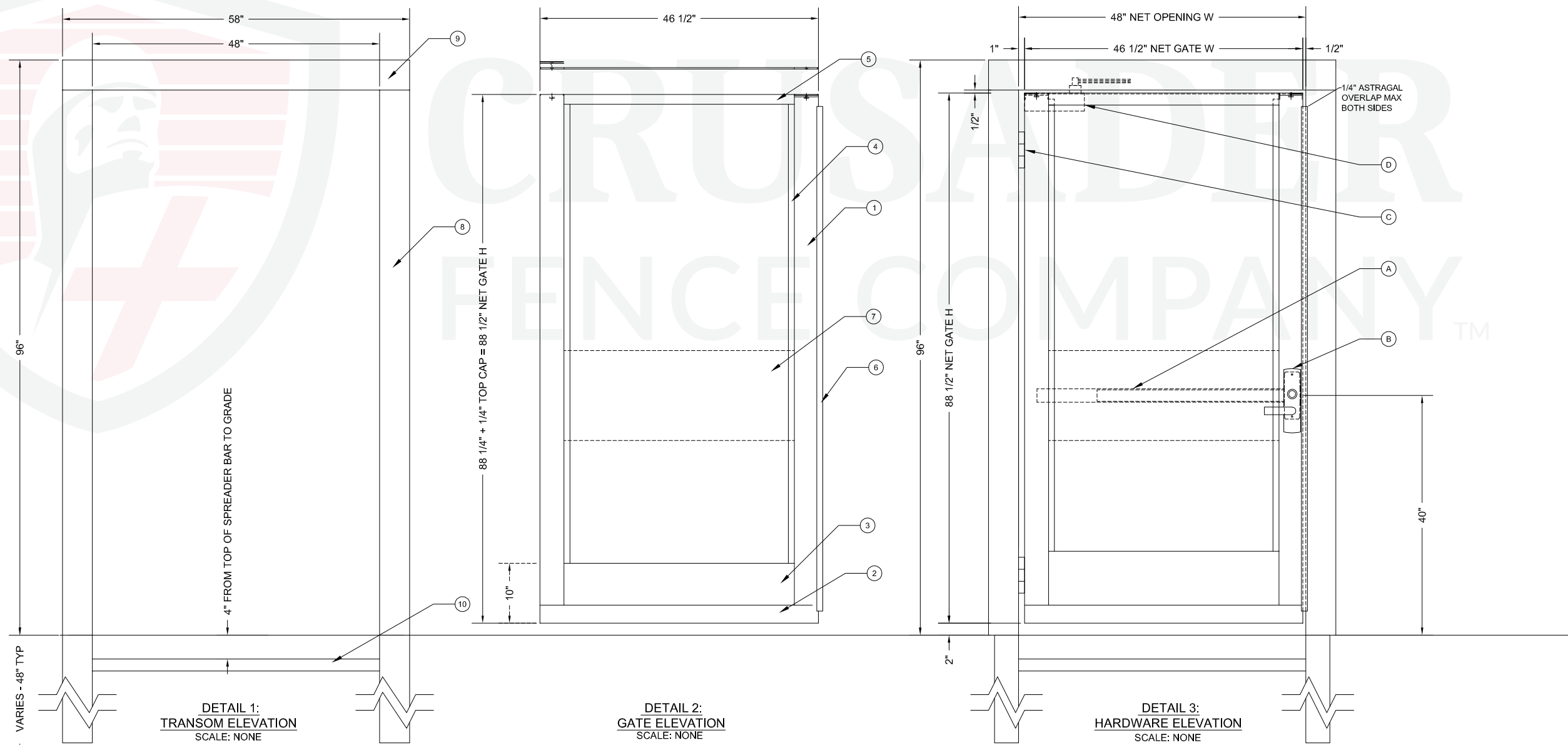


**DETAIL 4:
PANIC SHROUD**
SCALE: NONE

GATE BILL OF MATERIALS

ITEM	DESCRIPTION	MATERIAL	FINSIH	QUANTITY
1	GATE VERTICALS	4"X4" SQ 11GA TUBE	GALVANIZED TO BE PC	2
2	GATE BOTTOM	4"X4" SQ 11GA TUBE	GALVANIZED TO BE PC	1
3	KICKPLATE (BOTH SIDES)	1/8"X12" STEEL PLATE	GALVANIZED TO BE PC	2
4	1" FLAT BAR / 1" H X CUSTOM W U-CHANNEL	1/8" THICK FLAT BAR	GALVANIZED TO BE PC	6
5	4" FLAT BAR	1/4" THICK FLAT BAR	GALVANIZED TO BE PC	2
6	ASTRAGAL	1" X 1/8" FLAT BAR	GALVANIZED TO BE PC	1
7	12" PANIC PLATE (INSIDE ONLY)	1/8" PLATE	GALVANIZED TO BE PC	1

NOTE:
6 - ASTRAGAL TO BE FULL HEIGHT



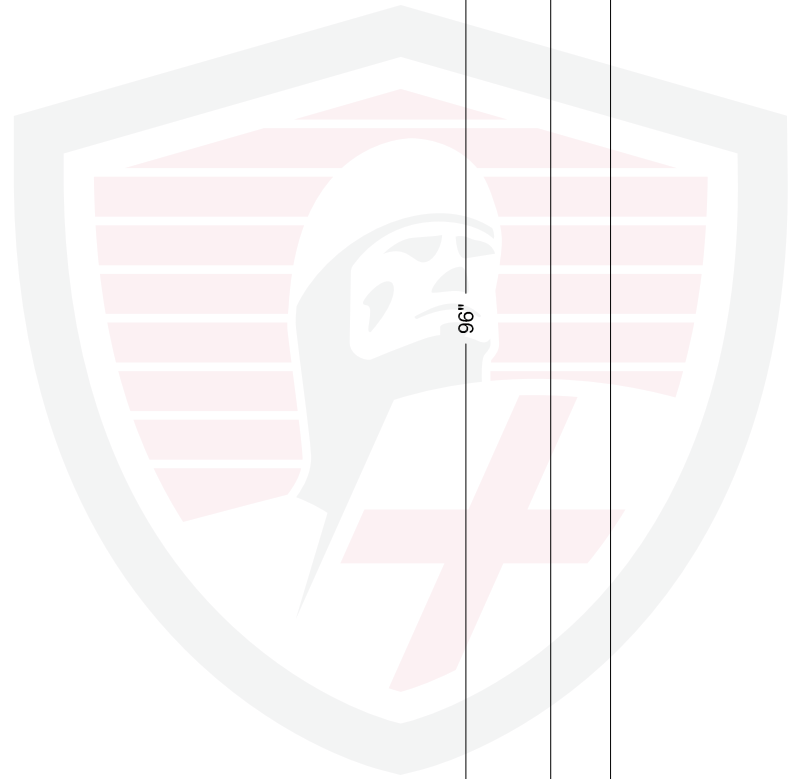
**DETAIL 1:
TRANSOM ELEVATION**
SCALE: NONE

**DETAIL 2:
GATE ELEVATION**
SCALE: NONE

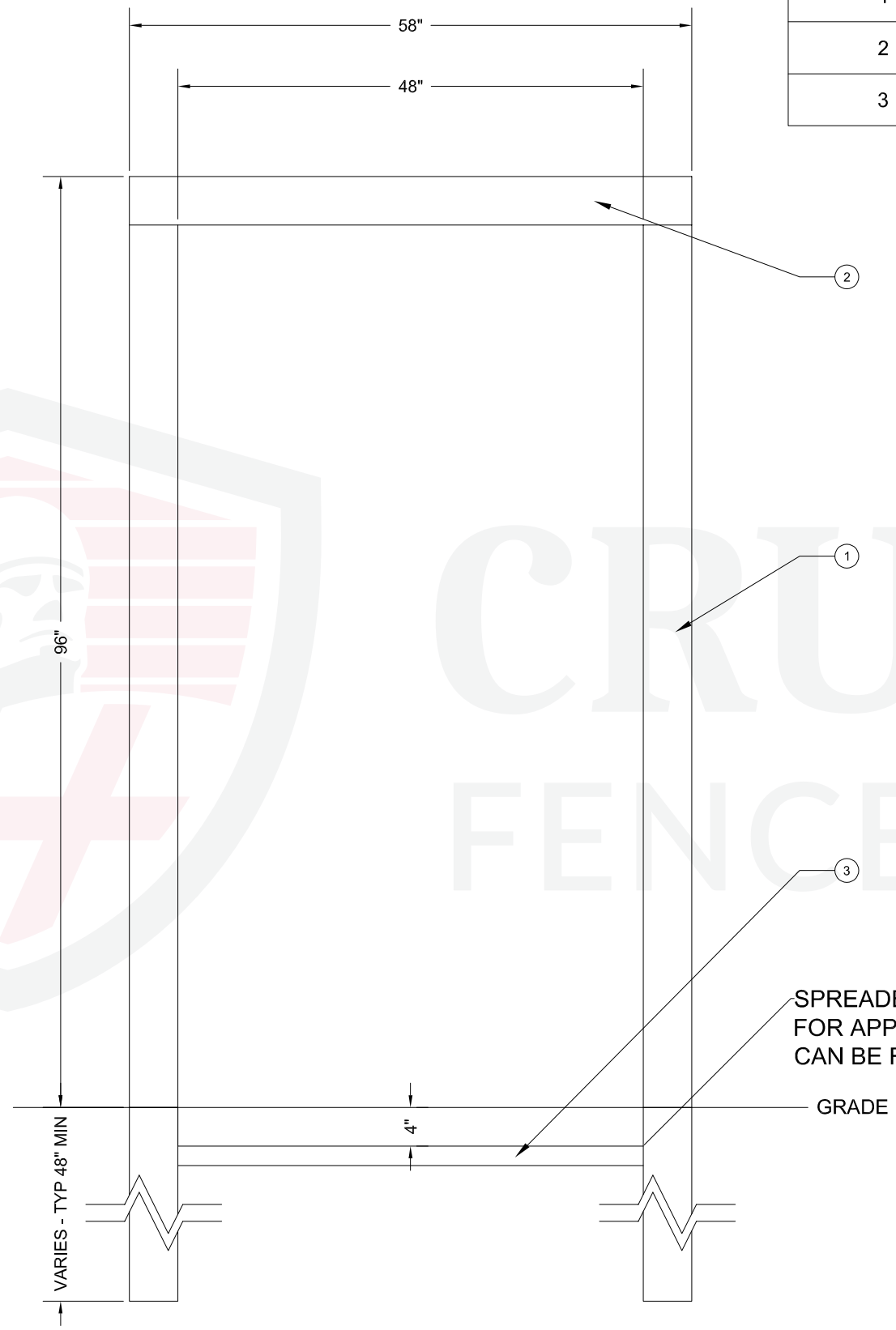
**DETAIL 3:
HARDWARE ELEVATION**
SCALE: NONE

PATENT PENDING # 18/327,547

HARDWARE BILL OF MATERIALS				
ITEM	DESCRIPTION	MATERIAL	FINSIH	QUANTITY
1	GATE FRAME VERTICALS	5"X5" SQ 11GA TUBE	GALVANIZED TO BE PC	2
2	GATE FRAME TRANSOM	5"X5" SQ 11GA TUBE	GALVANIZED TO BE PC	1
3	SPREADER BAR	2"X2" SQ 11GA TUBE	GALV - BURIED UNDRGRND	1



CRUSADER
FENCE COMPANY™

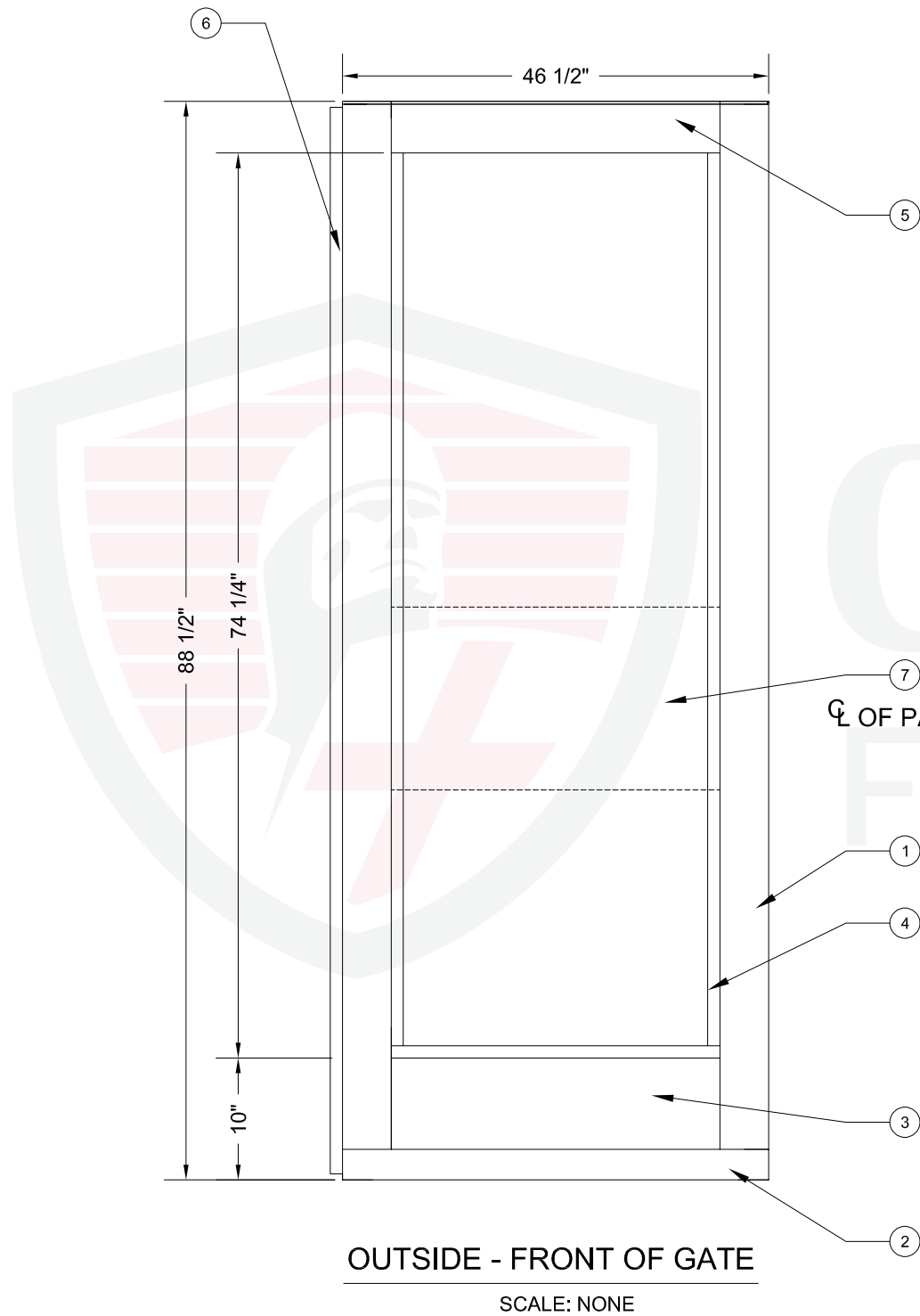


PATENT PENDING # 18/327,547

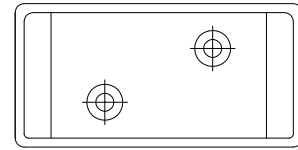
GATE BILL OF MATERIALS

ITEM	DESCRIPTION	MATERIAL	FINISH	QUANTITY
1	GATE VERTICALS	4"X4" SQ 11GA TUBE	GALVANIZED TO BE PC	2
2	GATE BOTTOM	4"X4" SQ 11GA TUBE	GALVANIZED TO BE PC	1
3	KICKPLATE (BOTH SIDES)	1/8"X12" STEEL PLATE	GALVANIZED TO BE PC	2
4	1" FLAT BAR / 1" H X CUSTOM W U-CHANNEL	1/8" THICK FLAT BAR	GALVANIZED TO BE PC	6
5	4" FLAT BAR	1/4" THICK FLAT BAR	GALVANIZED TO BE PC	2
6	ASTRAGAL	1" X 1/8" FLAT BAR	GALVANIZED TO BE PC	1
7	12" PANIC PLATE (INSIDE ONLY)	1/8" PLATE	GALVANIZED TO BE PC	1

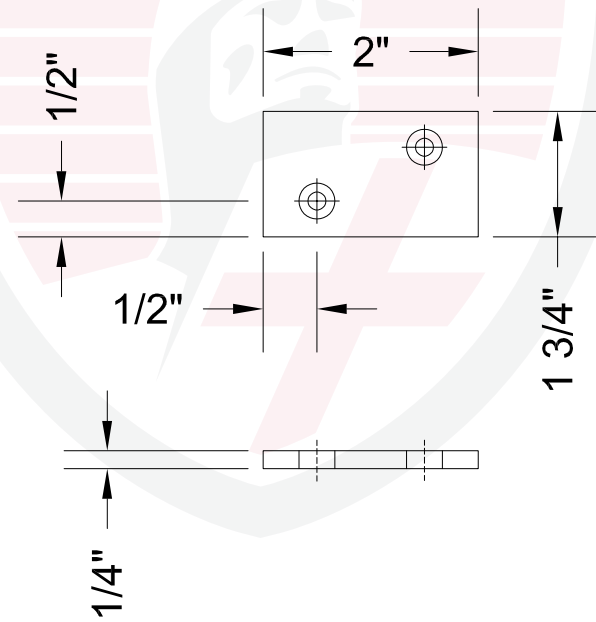
NOTE:
6 - ASTRAGAL TO BE FULL HEIGHT



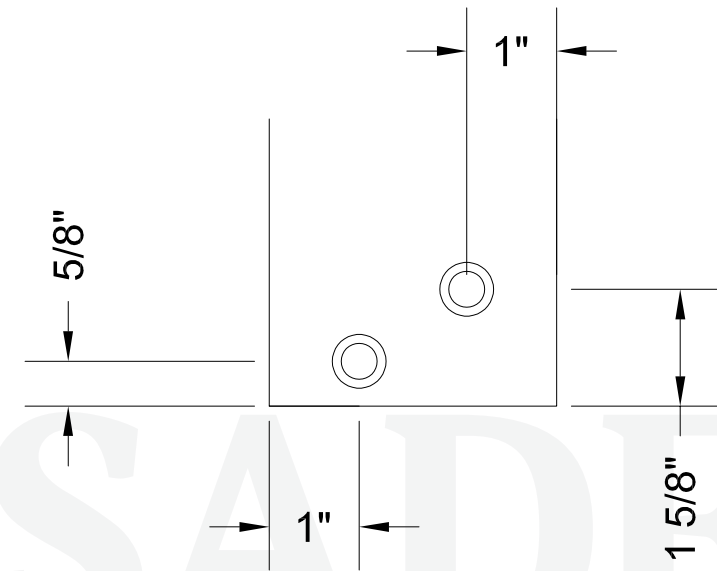
CRUSADER
FENCE COMPANY™



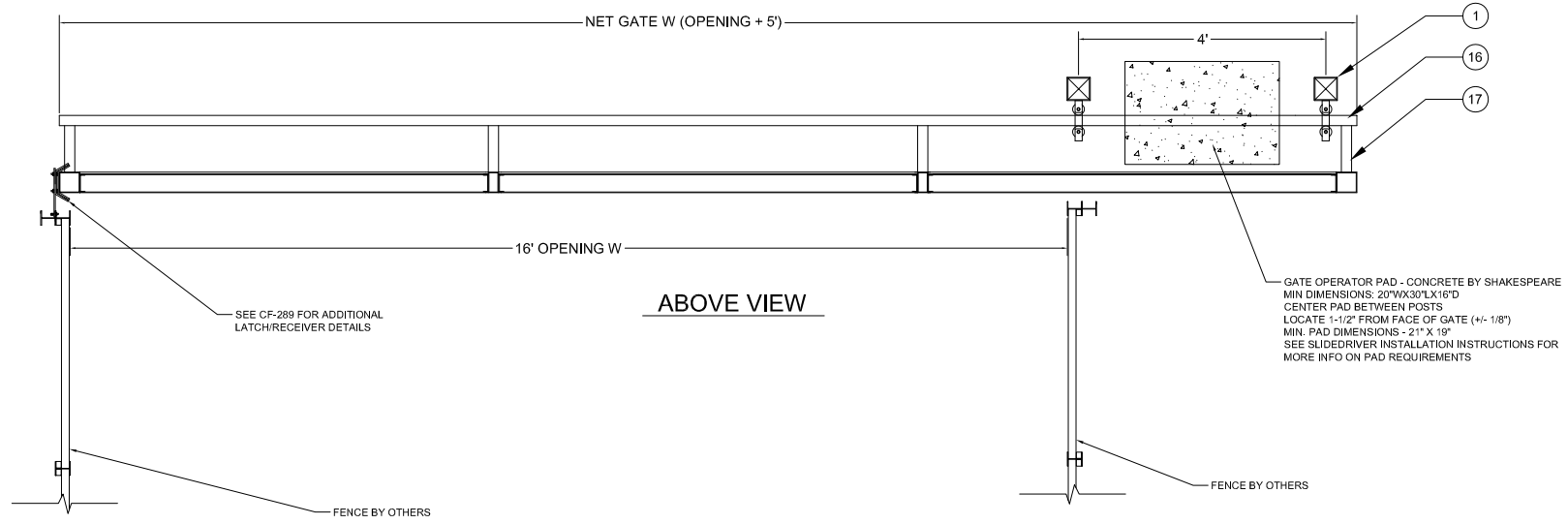
TOP VIEW - UPRIGHT W/ WELDED TAB



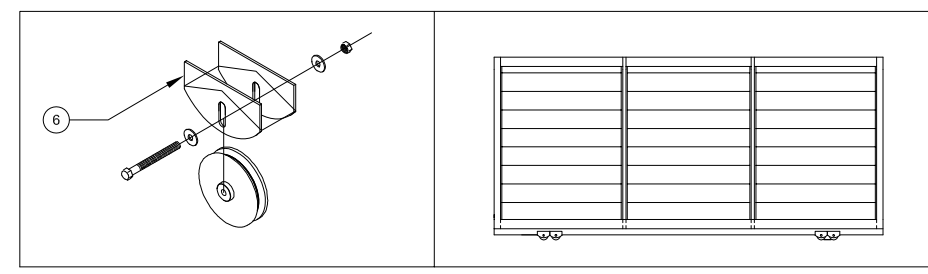
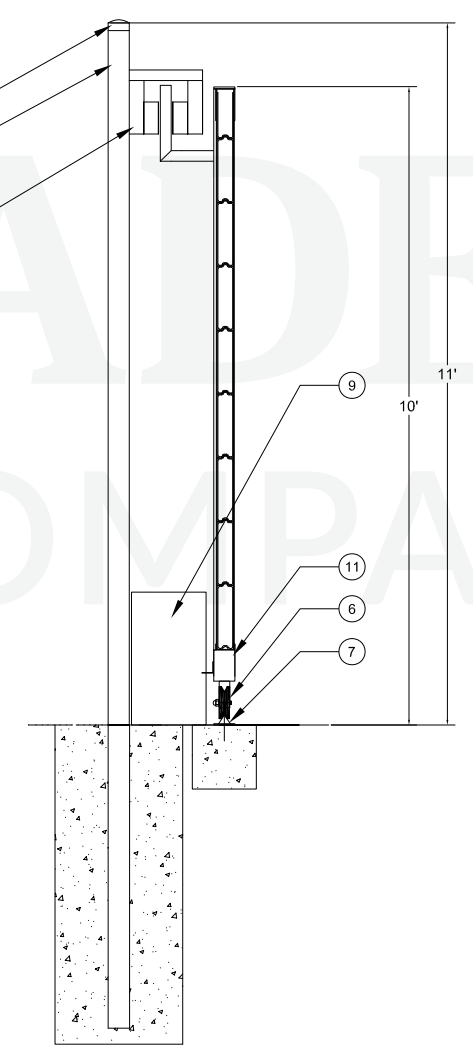
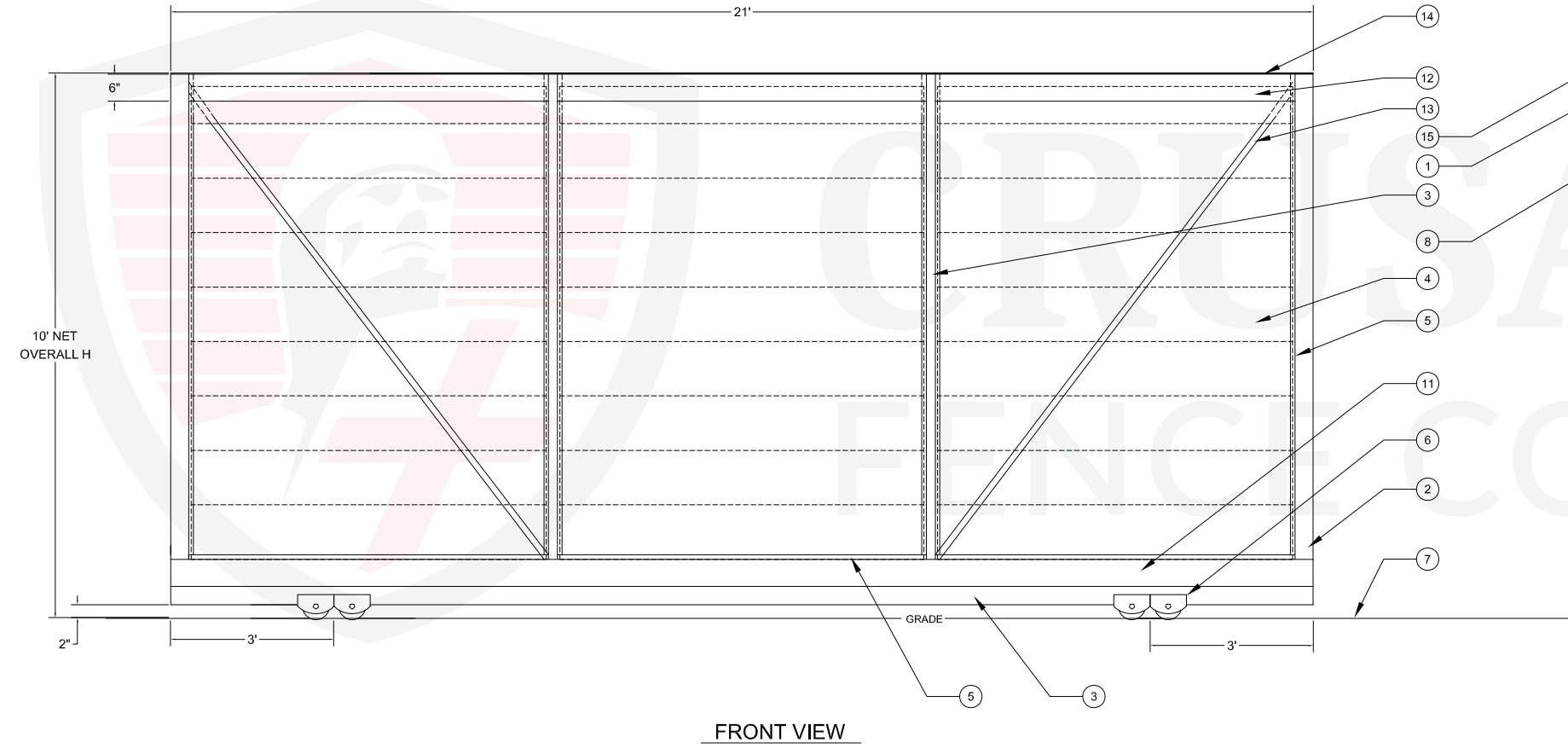
(8) ANCHOR TAB DETAIL



3" FLAT IRON TOP CAP -
END DETAIL & SCREW PLACEMENT



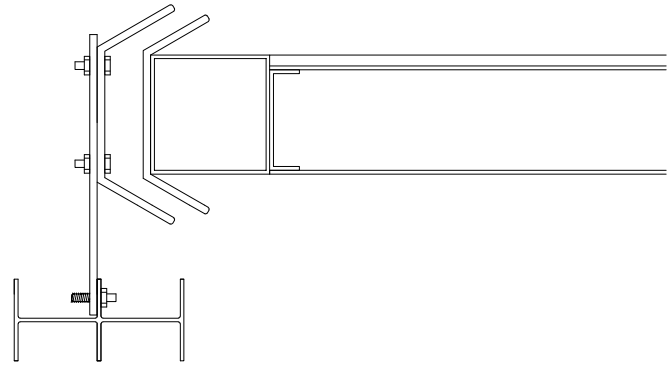
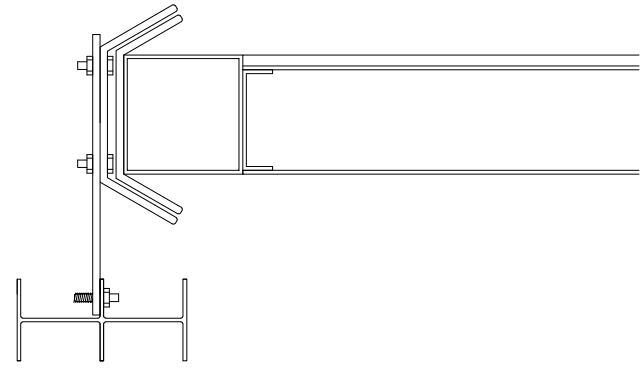
BILL OF MATERIALS			
ITEM	DESCRIPTION	MATERIAL	FINISH
1	GATE POST	5"X5"X1/4" SQ STEEL TUBE - GALVANIZED	POWDER COAT
2	GATE UPRIGHTS (ENDS ONLY)	4"X4" 11GA SQ STEEL TUBE - GALVANIZED	POWDER COAT
3	GATE UPRIGHTS AND BOTTOM WHEEL HOUSING	4"X2" 11GA SQ STEEL TUBE - GALVANIZED	POWDER COAT
4	FRP GATE INFILL	SHAKESPEARE 12" PANELS	BY OTHERS
5	U-CHANNEL	3-1/8" W X 1" H 14GA STEEL U-CHANNEL - GALVANIZED	POWDER COAT
6	WHEEL HOUSING	6" ROLL WHEELS AND STEEL HOUSING BOX	POWDER COAT
7	WHEEL TRACK	1-1/2" X 1-1/2" X 3/16" V-TRACK ON 1/4"X4" STEEL PLATE - GALVANIZED	POWDER COAT
8	GUIDE ROLL ASSEMBLY	4" GUIDE ROLL ASSEMBLY W/ THRU BOLT	POWDER COAT
9	GATE OPERATOR	SLIDE DRIVER 50	N/A
10	GATE POWER SUPPLY	BY OTHERS	N/A
11	BOTTOM RAIL	6"H X 4"W 11GA STEEL TUBE - GALVANIZED	POWDER COAT
12	COVER PLATE (TOP: BOTH SIDES)	1/8" THICK STEEL PLATE - GALVANIZED	POWDER COAT
13	TRUSS/SUPPORT RODS	2" STEEL FLAT BAR - GALVANIZED	POWDER COAT
14	ROLL GATE TOP CAP	CRUSADER DEFENDER SERIES TOP CAP SYSTEM	POWDER COAT
15	GATE POST CAP	PRESSED STEEL POST CAP - GALVANIZED	POWDER COAT
16	GUIDE ROLLER SECURITY RAIL	2"X2"X1/4" SQ. STEEL TUBE - GALVANIZED	POWDER COAT
17	SECURITY RAIL SUPPORT	4"X2"X1/4" SQ STEEL TUBE - GALVANIZED	POWDER COAT



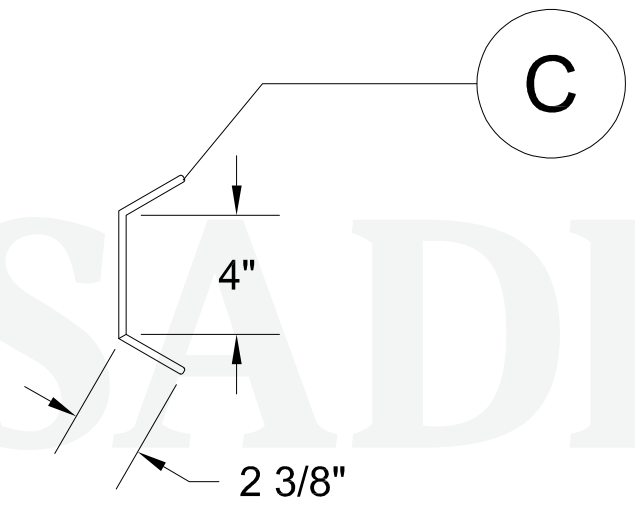
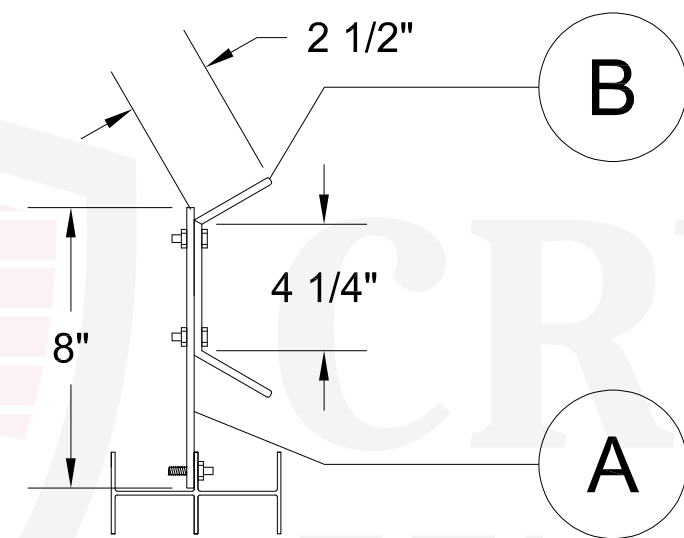
PATENT PENDING # 18/327,547

8 7 6 5 4 3 2 1

D



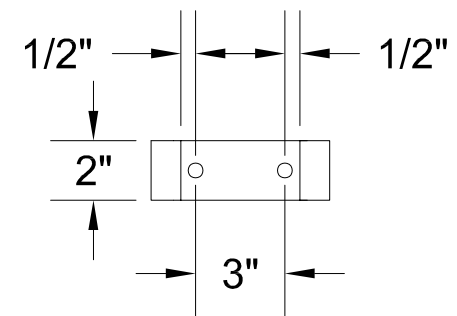
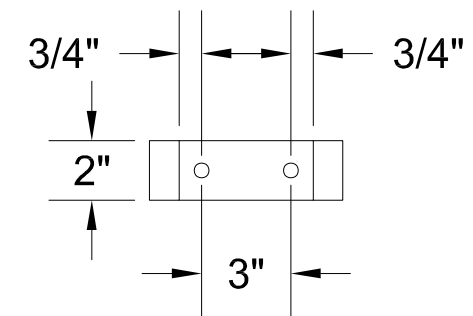
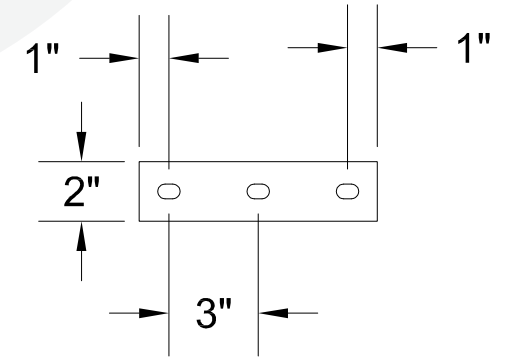
C



LATCH RECEIVER DETAIL

GATE LATCH DETAIL

B



DETAIL: A

DETAIL: B

DETAIL: C

A

PATENT PENDING # 18/327,547

8 7 6 5 4 3 2 1